

# Northumberland PREVENT Pathway

**PREVENT** is about working together to safeguard and support people who might be vulnerable to radicalisation.

If a person is being radicalised, their day-to-day behaviour may become increasingly centred around an extremist ideology, group or cause. Some of the signs of radicalisation could be:

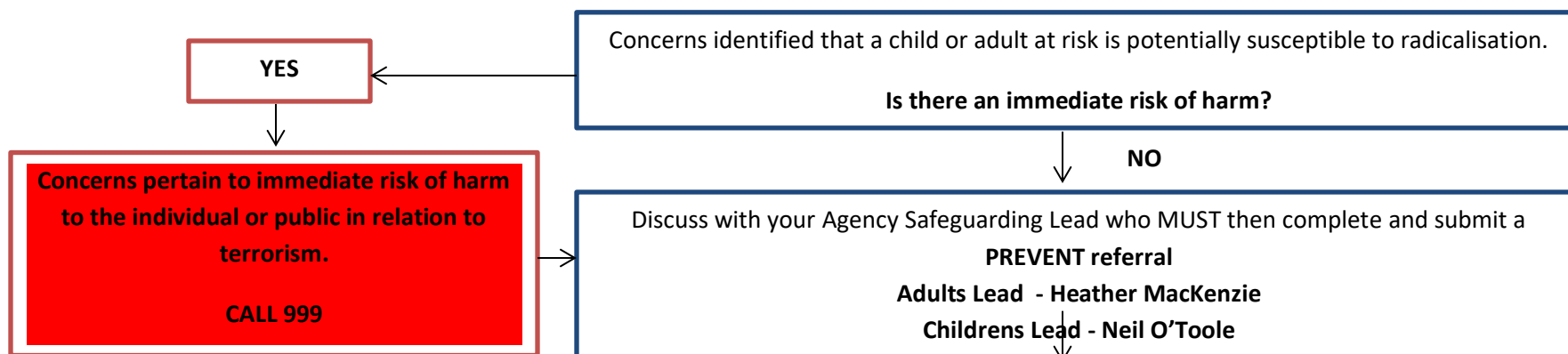
- spend increasing amounts of time talking to people with extreme views (this includes online and offline communication)
- changing their style of dress or personal appearance
- losing interest in friends and activities that are not associated with the extremist ideology, group or cause
- possessing material or symbols associated with an extreme cause
- trying to recruit others to join the cause

## **I'm concerned someone is at risk of radicalisation. What should I do?**

- Report your concerns to the local authority that the person you're worried about lives. You can find the contact numbers and where to get in touch below.
- Remember: PREVENT does not criminalise those who are referred. We aim to safeguard and help those at risk.

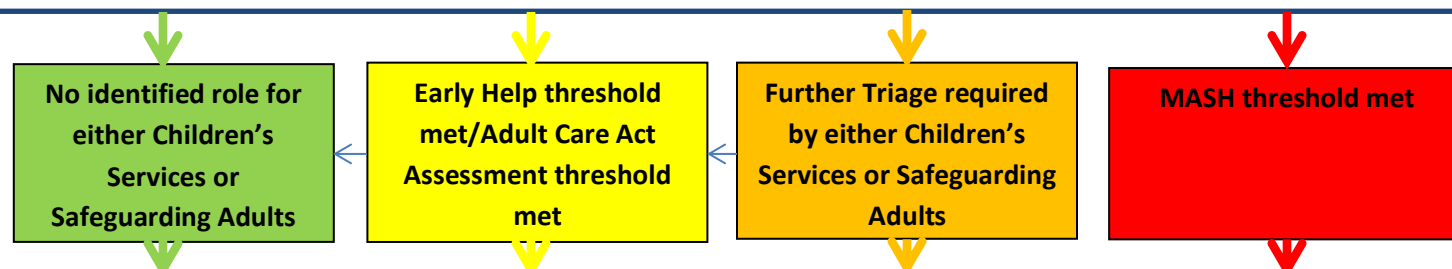
## **Key Contacts**

Prevent Mailbox	- <a href="mailto:prevent@northumberland.gov.uk">prevent@northumberland.gov.uk</a>
PREVENT referral Form	- <a href="#">Northumberland Prevent Referral Form</a>
Chris Grice	- Prevent Lead Strategic Community Safety <a href="mailto:Chris.Grice@northumberland.gov.uk">Chris.Grice@northumberland.gov.uk</a>
Neil O'Toole	- Prevent Lead Children's Services <a href="mailto:neil.o'toole@northumberland.gov.uk">neil.o'toole@northumberland.gov.uk</a>
Heather MacKenzie	- Prevent Lead Adult Services <a href="mailto:Heather.MacKenzie@northumberland.gov.uk">Heather.MacKenzie@northumberland.gov.uk</a>
Counter Terrorism Policing North East (CTPNE)	- <a href="mailto:fimunorth@ctpne.police.uk">fimunorth@ctpne.police.uk</a>
Onecall	- 01670 536400
Children's Triage	- <a href="mailto:childrentriage@northumberland.gov.uk">childrentriage@northumberland.gov.uk</a>
Adult Triage	- <a href="mailto:safeguardingreferrals@northumberland.gov.uk">safeguardingreferrals@northumberland.gov.uk</a>



Referral received

Discussion to take place between CTPNE, Children's Services Team Manager and Adult Safeguarding Team Manager to establish thresholds, roles and responsibilities



Prevent Leads and Coordinator Notified by Team Manager of outcome

Childrens or Adults Team Manager inform CTPNE who will complete agency checks within 10 working days

CTPNE to Assess Criteria for Channel Panel

**Potential Outcomes:**

Threshold for Channel Panel met  
VAF prepared by CTPNE  
Referrer to attend Channel Panel  
Case considered at Channel Panel  
**Referrer notified of outcome**

Threshold for Channel Panel not met

Early Help assessment completed and plan implemented  
Adult Care Plan implemented

Child and Family Assessment or Safeguarding Adult Concerns Notification recorded/safety planning

Child in Need Plan identified

Triage to progress case to MASH manager  
Prevent Leads notified case is in MASH  
Neil O'Toole  
Heather MacKenzie  
CTPNE  
**Continue to MASH Pathway**

## MASH PREVENT threshold met

Discussion between MASH Team Managers (Children's and Adults if applicable) and CTPNE

Rag rating applied for response time: **RED 2 Hours** **AMBER 4 Hours** **GREEN 8 Hours**

Agency Checks undertaken with the following partners:

Adult Safeguarding	CNTW	Children's Services	Probation
Police	CRC	Northumberland Fire and Rescue	
Education – inc college	CCG	Early Help Services	

Research received and further discussion with Team Managers, Police and Prevent Lead for Safety Planning and thresholds to be discussed. **MASH episode form sent to CTPNE.**

CTPNE to Assess Criteria for Channel Panel

**Potential Outcomes:**

Threshold for Channel Panel met  
VAF prepared by CTPNE  
Referrer to attend Channel Panel  
Case considered at Channel Panel  
**Referrer notified of outcome**

Threshold for Channel Panel not met  
Signpost to other services

**Referrer notified of outcome**

**No identified role for either Children's Services or Safeguarding Adults**

**Early Help threshold met/Adult Care Act Assessment threshold met**

Child and Family Assessment or Safeguarding Adult Concerns Notification recorded/safety planning

Child in Need Plan identified

Progress to strategy Meeting/ discussion

Outcome to be shared with CTPNE and LA Childrens and Adults Prevent Leads notified

Child Protection Enquiry/Adult Safeguarding Enquiry

Child Protection Plan/Adult Safeguarding Plan

